



RADIOLOGICAL ANTOMY OF THE BRAIN

جامعة ساوة

كلية التقنيات الصحية والطبية

قسم تقنيات الأشعة

المرحلة

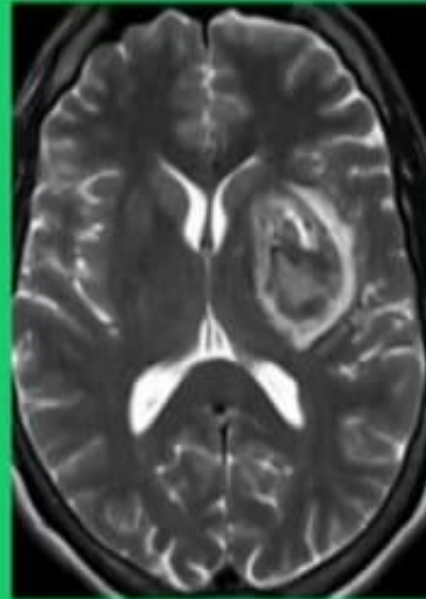
رقم المحاضرة (١)

اسم المحاضر: م.م. كرار كامل

BRAIN



Brain



The brain regulates and coordinates many critical functions, from thought processes to bodily movements.

For this reason

It is important to identify the anatomy of the brain

SECTION ANATOMY

SECTIONAL ANATOMY

MRI

CT

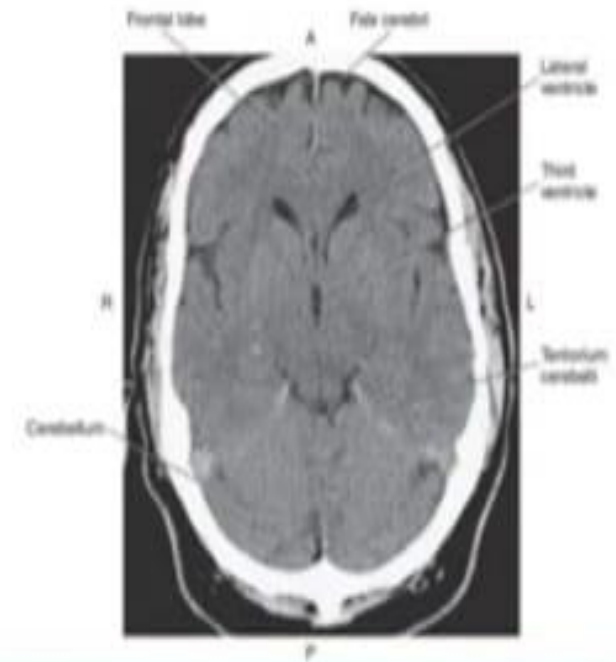




Table of Contents

MENINGES

LIMBIC SYSTEM

VENTRICULAR SYSTEM

BRAINSTEM

CEREBRUM

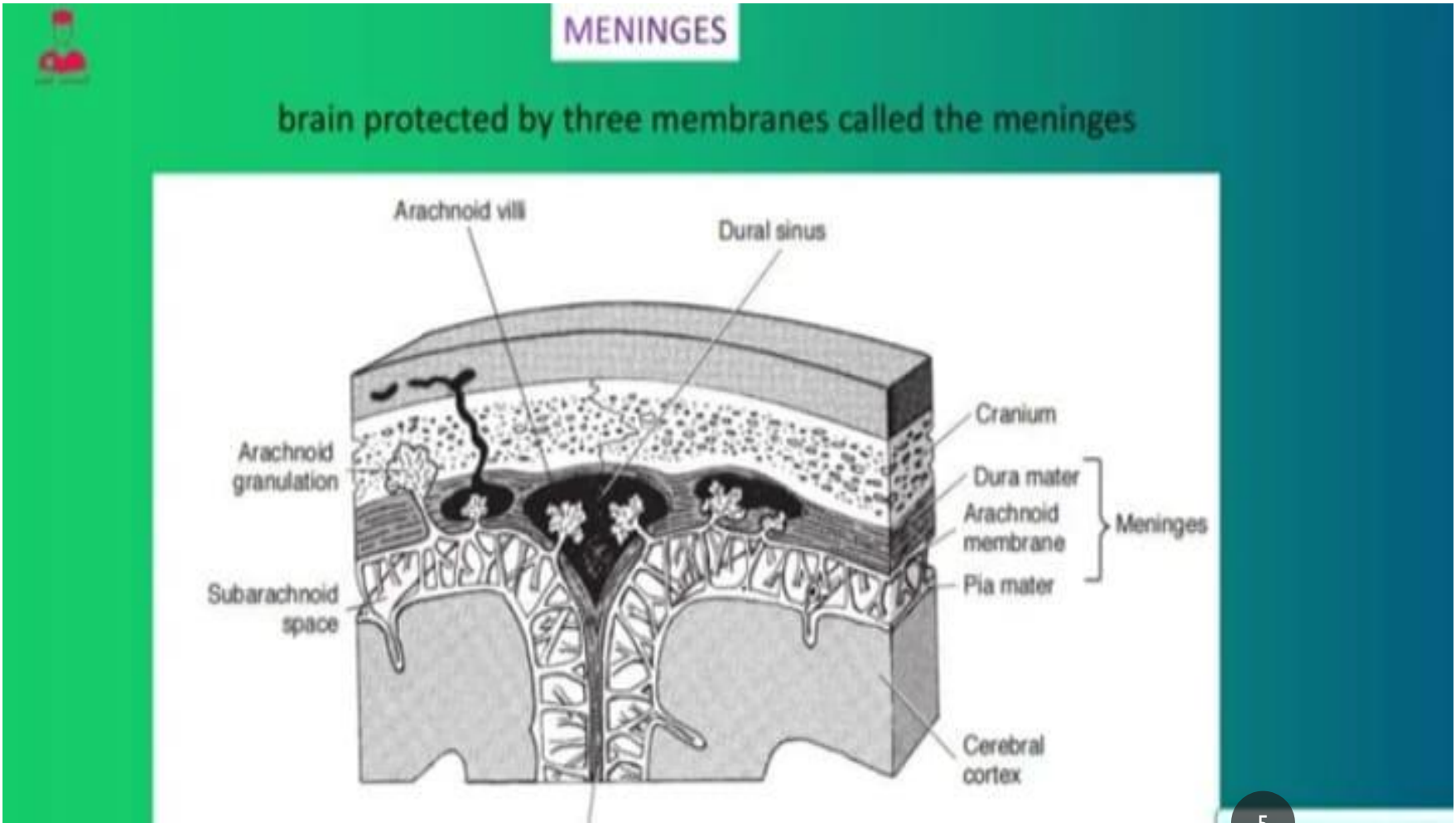
CEREBELLUM

DIENCEPHALON

CEREBRAL VASCULAR
SYSTEM

CRANIAL NERVES

MENINGES



MENINGES



dura mater

outermost membrane

strongest

double-layered membrane

continuous with the periosteum

Located between the dura mater and the cranium are the **meningeal vessels**

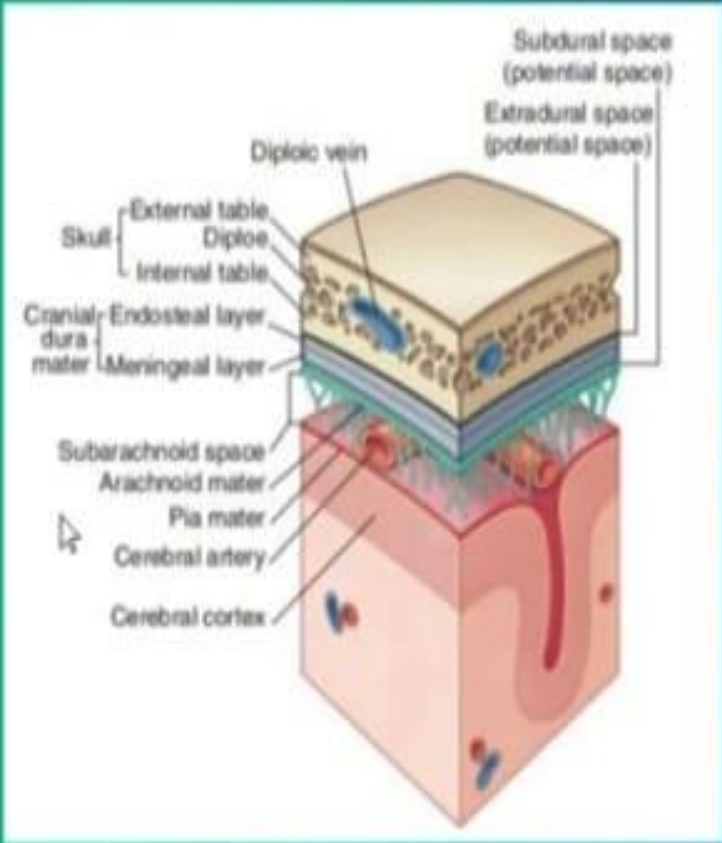
which supply blood to the cranium and meninges.

potential space between the dura mater and the cranium

epidural (extradural) space

between the two layers of dura mater are the **dural sinuses**

which provide venous drainage from the brain.



MENINGES



dural folds

falx cerebri

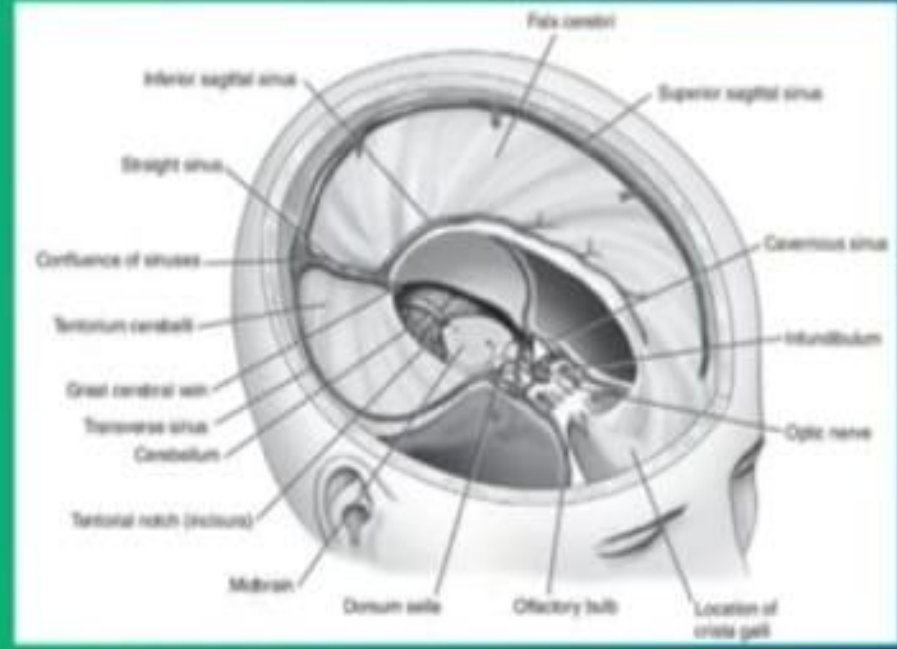
separates the cerebral hemispheres

tentorium cerebelli

forms a partition between the cerebrum and cerebellum

oval opening in the tentorium cerebelli forms the **tentorial notch (incisura)**

which surrounds the midbrain and provides the only communication between the supratentorial and infratentorial spaces within the brain



MENINGES



arachnoid membrane

separated from the dura mater by a potential space called the **subdural space**

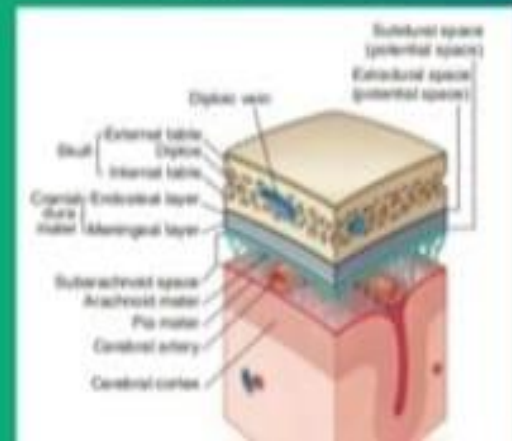
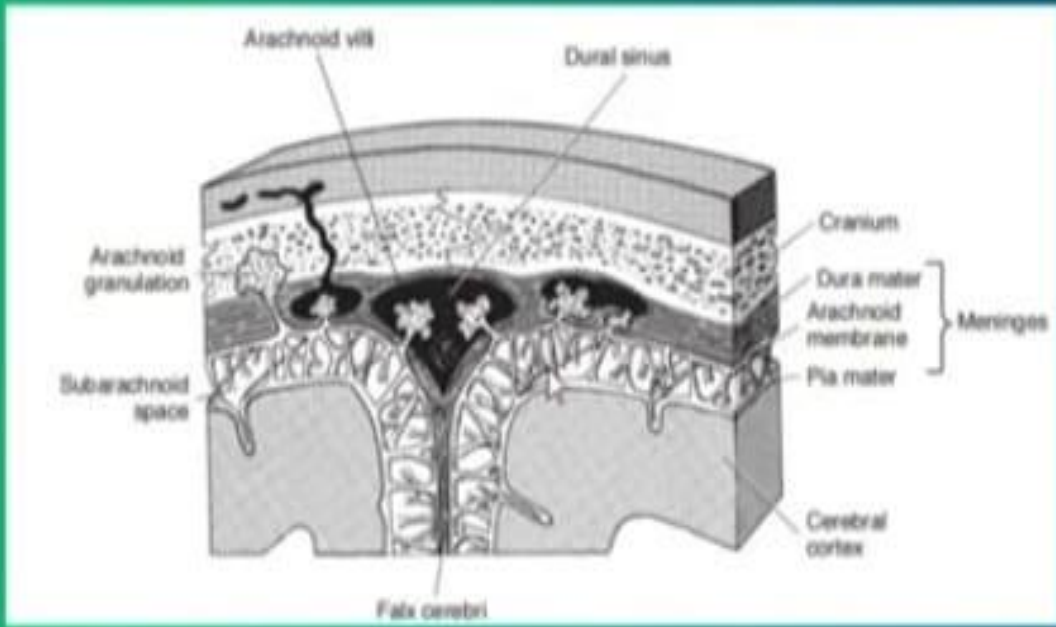
separates the pia mater from the arachnoid mater

subarachnoid space

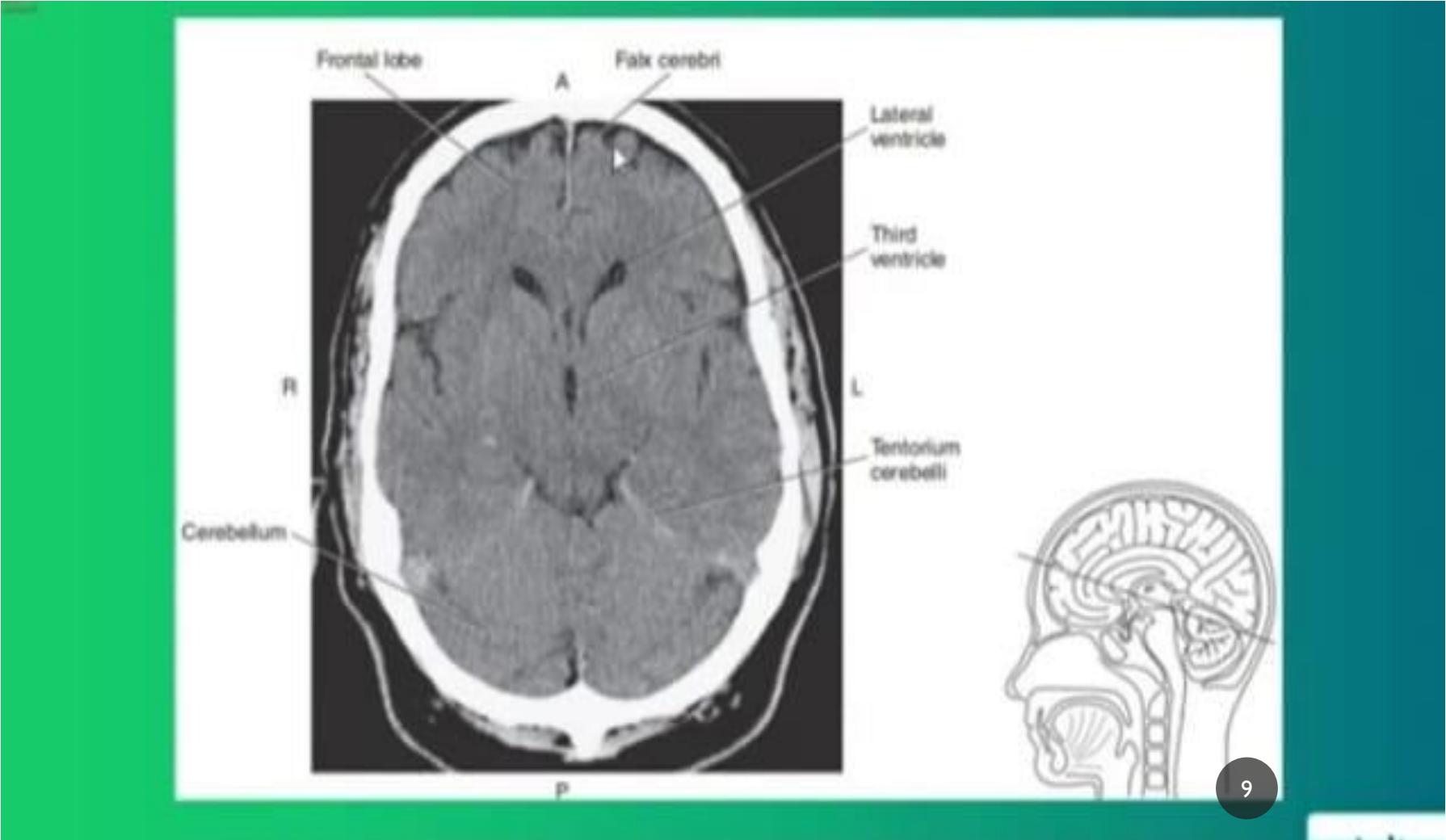
This space contains cerebrospinal fluid

pia mater

highly vascular layer that adheres closely to the contours of the brain



MENINGES



MENINGES

